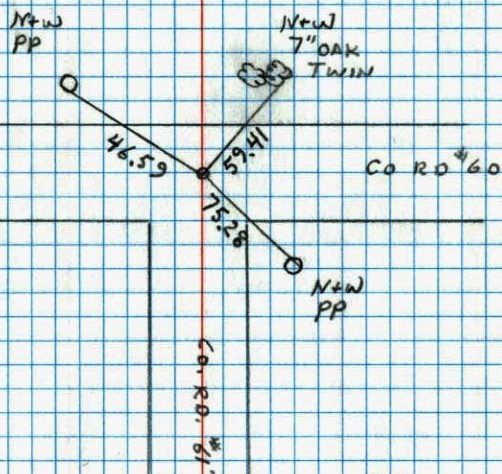
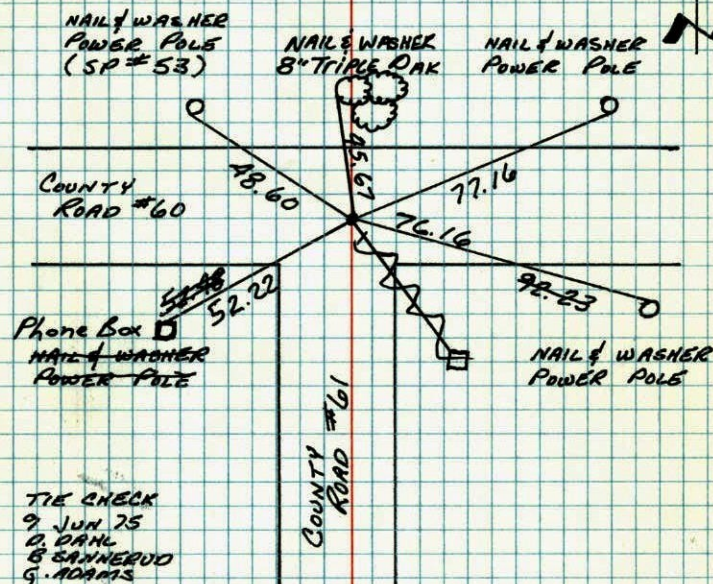


W 1/6 ON NW 1/4 OF SECTION 15 T32 R23

RETIED IRON PIPE

LAKE NEVA

1-2-91  
N. LARSON  
B. KLENZ  
M. STEWARTW 1/6 CORNER OF NW 1/4 OF  
SECTION 15 - T32 - R23FOUND CARTWRIGHT AND OLSON'S IRON PIPE. ONE OLD  
TIE REMAINING (DOWN O.E')8 FEB 61  
FREEMAN  
ANDERSONTIE CHECK  
9 JUN 75  
D. DANL  
B. SANNERUD  
G. ADAMSTIE CHECK  
July 10, 1984  
R. Bennett  
G. Lips  
D. RossTEMPERATURE CORRECTED  
AND HORIZONTALLY  
TAPED MEASUREMENTSROLAND W. ANDERSON  
COUNTY SURVEYOR  
ANOKA COUNTY, MINNESOTA



W 1/4 Cor. of NW 1/4

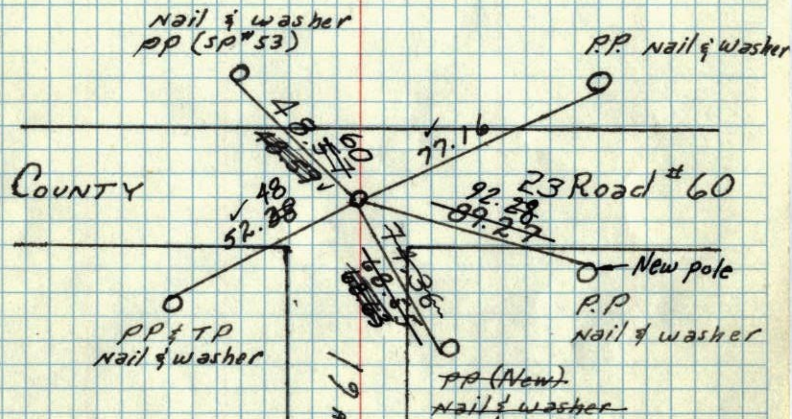
52

N 1/2 Cor. on W Line of Sec 15-32-23

(Ham Lake)

Found C & O's Iron 1 old Tie Remaining  
Down 0.2'

Tie Check  
R. Brien  
J. Boettcher



Tie Check  
June 9, 1975  
D. Dahl  
B. Sonnerud  
G. Adams

Tie Check  
Aug. 2, 1966  
H. Larson  
D. Potter  
G. Reimer

Retie 7/15/64

M. D. Anderson  
R. Carlson

TEMPERATURE CORRECTED  
AND HORIZONTALLY  
TAPED MEASUREMENTS

8 Feb. 1961

R. Freeman  
M. ANDERSON

ROLAND W. ANDERSON  
COUNTY SURVEYOR  
ANOKA COUNTY, MINNESOTA

W 1/4 Cor. of NW

8 Feb 1961

Freeman Anderson

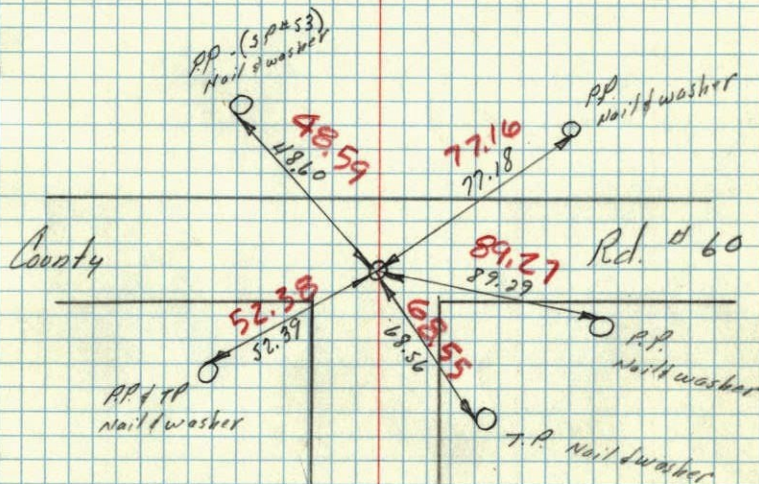
+ 36°

N 1/2 Cor. on W Line of Sec 15-32-23

(Ham Lake)

Found C. & O.'s Iron 1 Tie Remaining.

TEMP. CORR. FOR  
+ 36°



# 13 A  
Tie  
In Book

County Rd #61